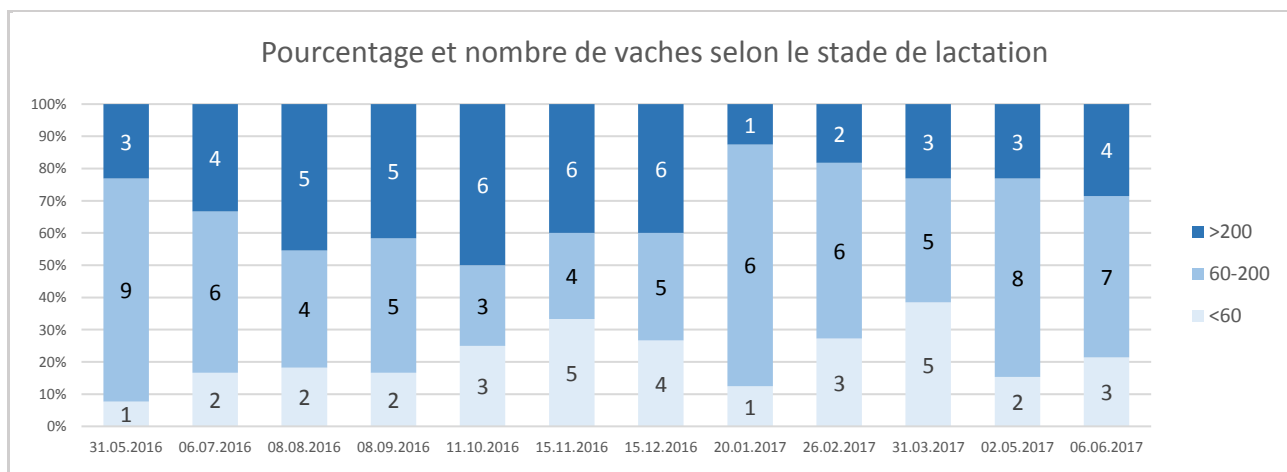
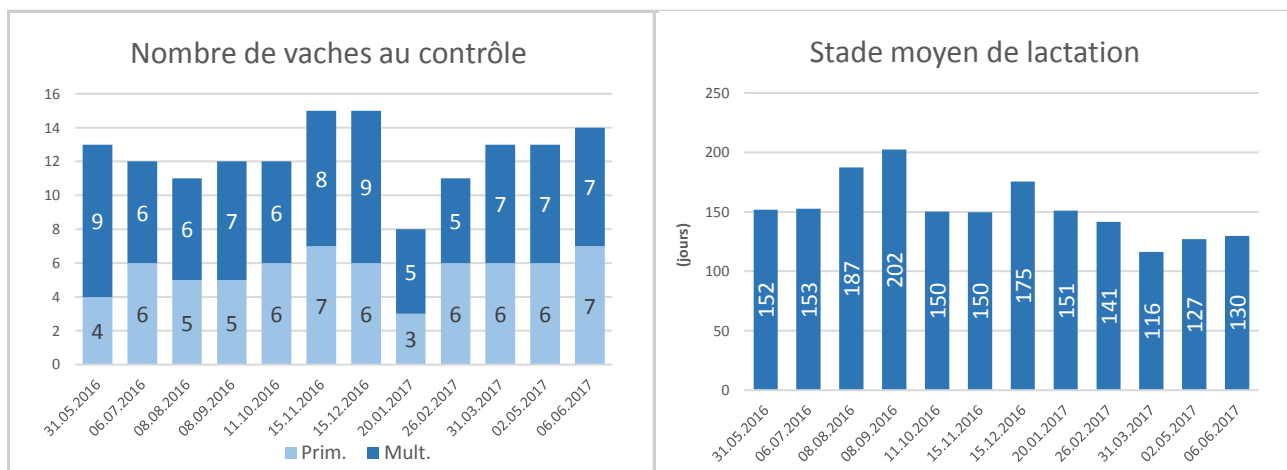
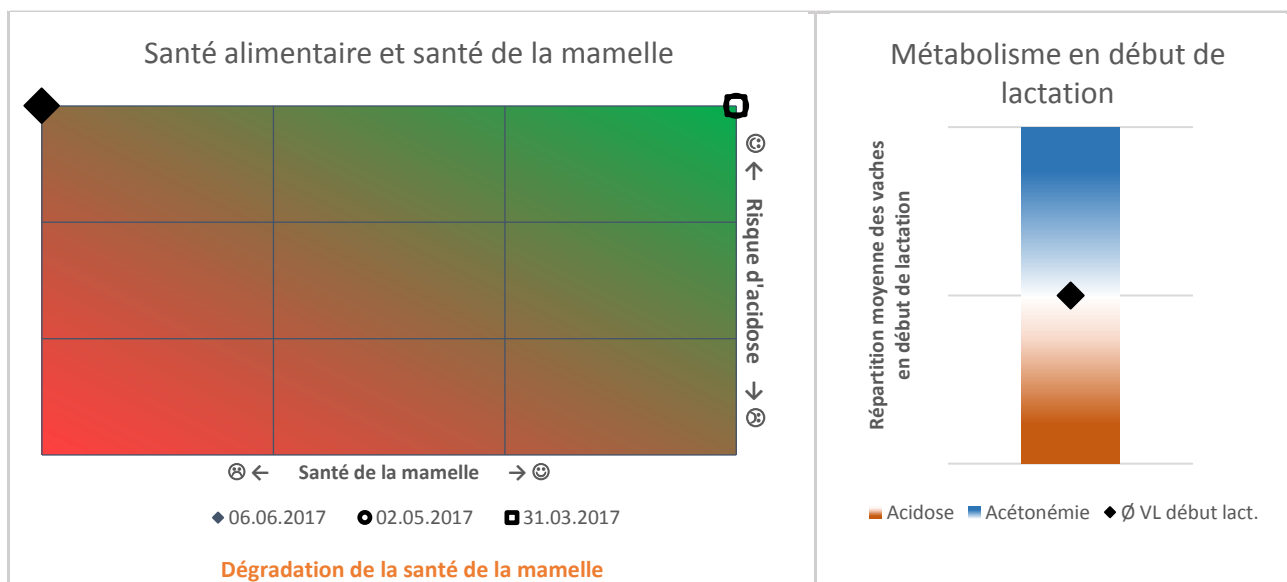


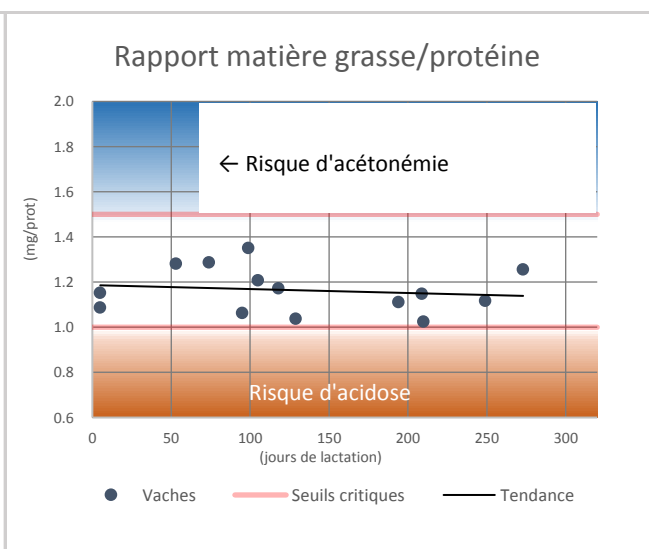
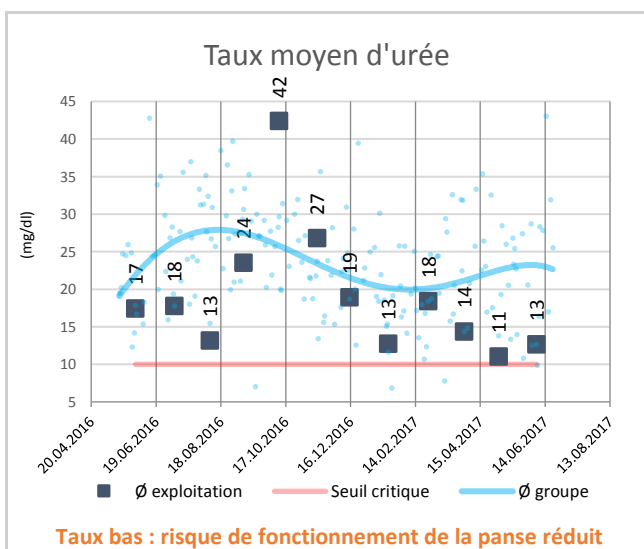
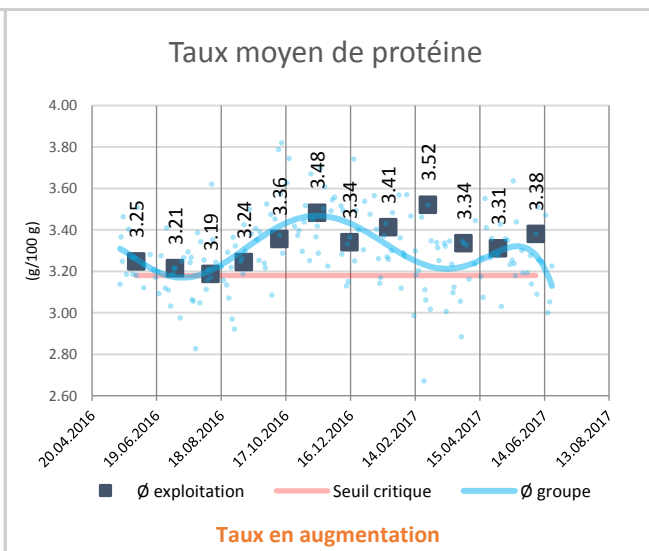
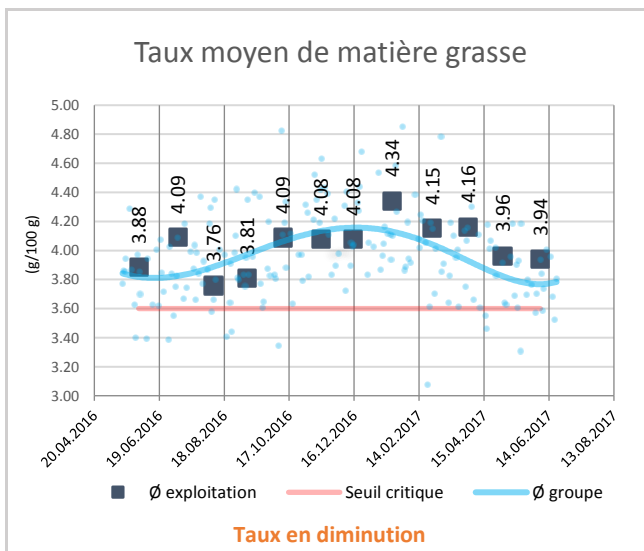
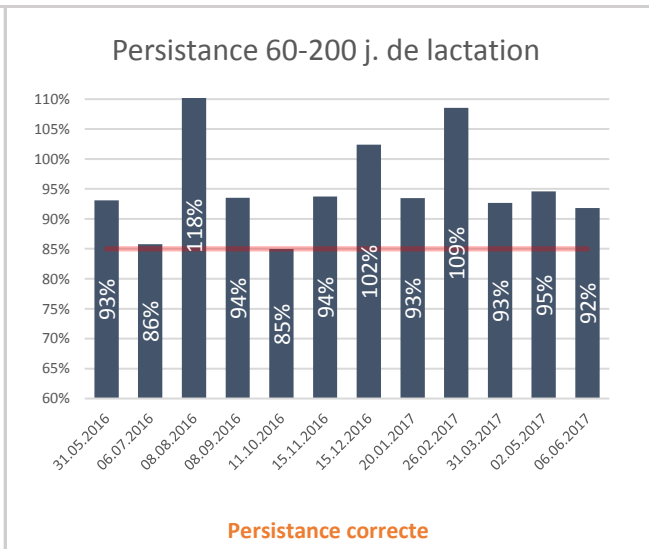
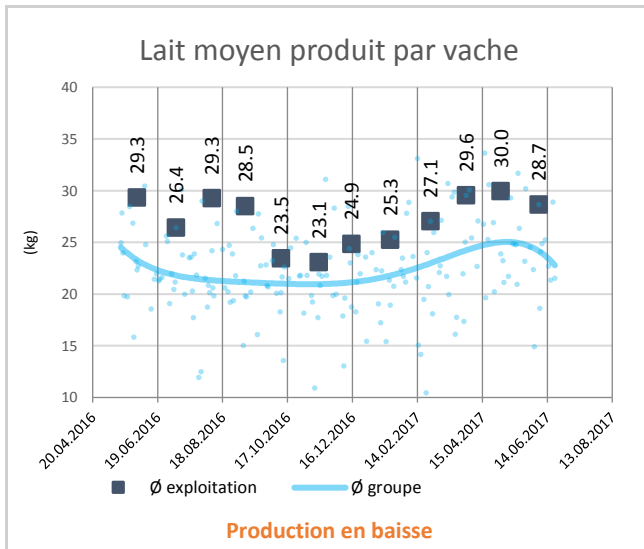
Les principaux paramètres du troupeau



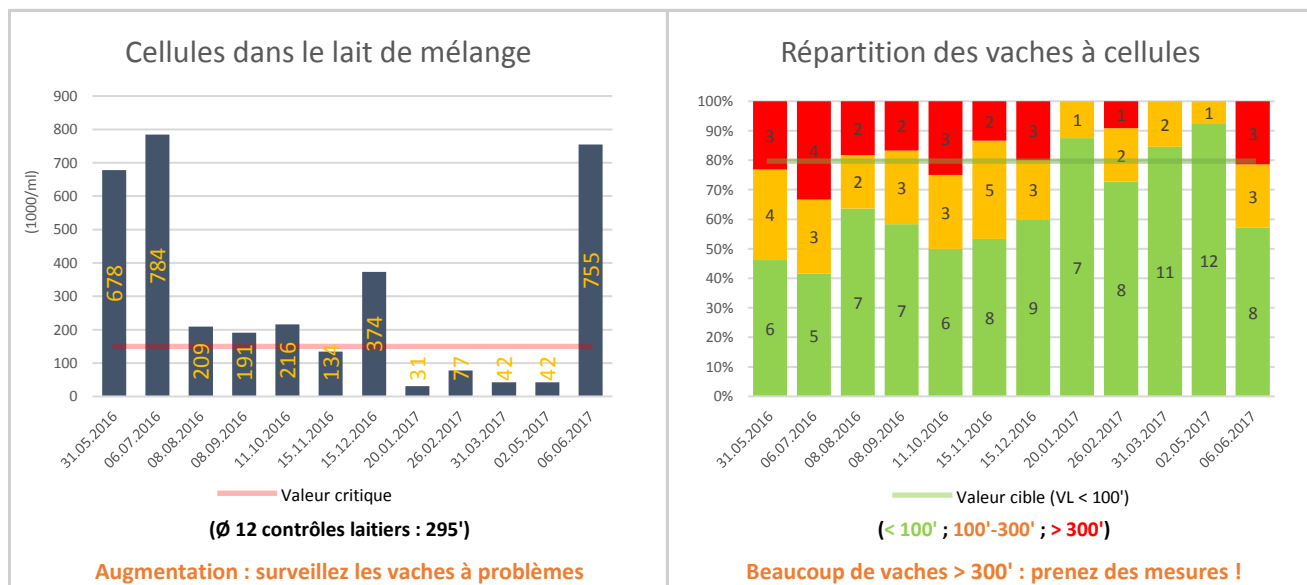
Les principaux indicateurs de santé du troupeau



Les résultats détaillés du contrôle laitier



La santé de la mamelle



N° Trava	Nom	Date CL											
		06.06.17	02.05.17	31.03.17	26.02.17	20.01.17	15.12.16	15.11.16	11.10.16	08.09.16	08.08.16	06.07.16	31.05.16
(vide)	ASTRIDE	1966	7	13	31	10	17			30	32	23	60
	BABETTE				722	135	239	185	1050	576	716	1315	190
	CIGALE	50	53	40	41								
	COCOTTE						37	197		20	18	11	12
	CORNEILLE							15	17				
	DEESSE	32	20	17	12								
	FRISONNE												1308
	GITANE	81	50	61	126	67	211	468					
	JALOUSE	81	63	37			5333	475	453	1269	1129	848	30
	JAVANAISE	9	7	7	5	9	11	30		23	9	22	19
	JEBELLE	1910											
	JUDITE	202	103	115	132								
	LUNA	5	7	13			69	92	70	106	87	131	84
	LUNE	31	25	28	20	10	53	15	18				
	LUNETTE											109	57
	MILKA	9999	13	15	11	13	16	19	28				
	OLIVE						321	170	446	40	27	5318	2060
	REVEUSE	108	55	106			80	139	113	101	132	146	132
	RISOLLE											3361	
	SAVANNE	38		32	22	26	23	39	51	109	46		
	SUZETTE												236
	TESS						310	189	133	20	17	52	
	VERONIC	124	85				125	70	122	46	112	33	3356
	WENDA		36	58	36	21	16	9	27	24			145